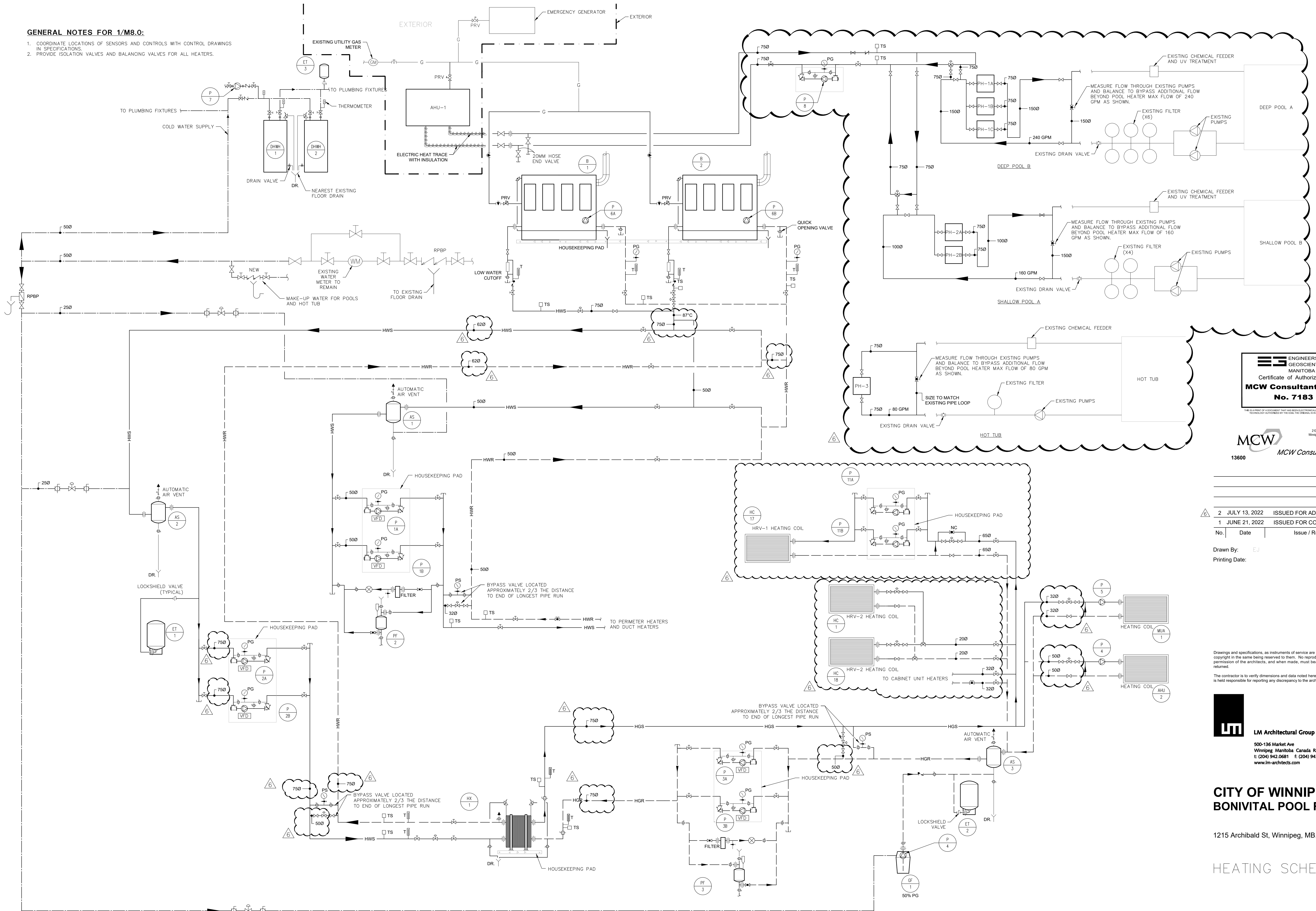


GENERAL NOTES FOR 1/M8.0:

- COORDINATE LOCATIONS OF SENSORS AND CONTROLS WITH CONTROL DRAWINGS IN SPECIFICATIONS.
- PROVIDE ISOLATION VALVES AND BALANCING VALVES FOR ALL HEATERS.



**ENGINEERS
GEOSCIENTISTS
MANITOBA**
Certificate of Authorization
MCW Consultants Ltd.
No. 7183

MCW
13600
215-821 Wellington Avenue
Winnipeg, Manitoba, R3B 0G4
Phone: (204) 779-7900
Fax: (204) 779-7900
www.mcw.com

| | | | |
|-----------------|-------------------------|------------------|----|
| 2 JULY 13, 2022 | ISSUED FOR ADD#06 | | |
| 1 JUNE 21, 2022 | ISSUED FOR CONSTRUCTION | | |
| No. | Date | Issue / Revision | By |

Drawn By: EJ
Printing Date:

Drawings and specifications, as instruments of service are the property of the architects, the copyright in the same being reserved to them. No reproduction may be made without the permission of the architects, and when made, must bear their names. All prints to be returned.
The contractor is to verify dimensions and data noted herein with conditions on the site and is held responsible for reporting any discrepancy to the architects for adjustment.

LM **LM Architectural Group**
500-136 Market Ave
Winnipeg, Manitoba, Canada R3B 0P4
t: (204) 942.0681 f: (204) 943.8676
www.lm-architects.com

**CITY OF WINNIPEG
BONIVITAL POOL RENEWAL**

1215 Archibald St, Winnipeg, MB.

HEATING SCHEMATIC